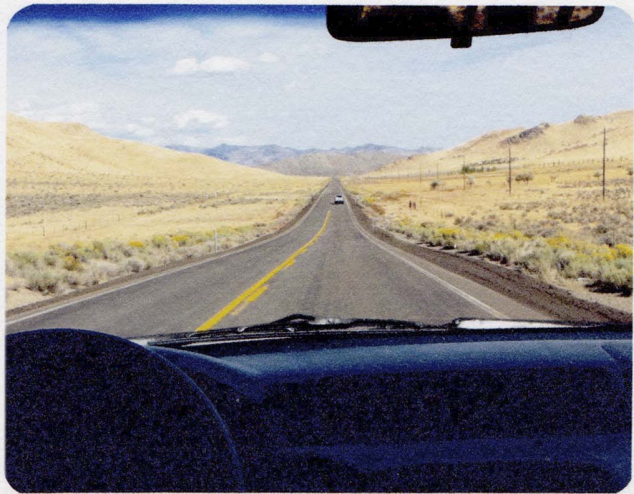


A DAY TRIP NEAR PYRAMID LAKE





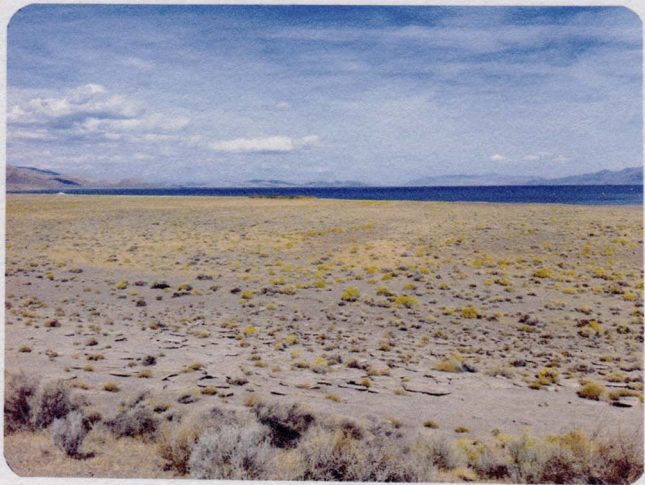


























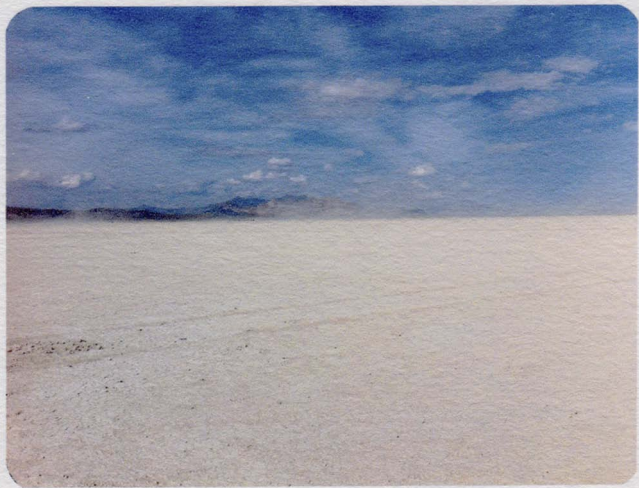
































Pyramid Lake

The Great Basin, an interior desert region of the United States where water only flows inward and never out, holds two great remnants of the last Ice Age: the Great Salt Lake in Utah, and Pyramid Lake in Nevada. Both are salty bodies of water with no outlet, relicts of the ancient inland seas that once covered the desert. Pyramid Lake is almost 30 miles long and 9 miles wide, and maintains a maximum depth of 331 feet. Although only a tenth the surface area of the Great Salt Lake, it is 25% greater in volume. The lake is populated with two endangered fish species, and the water level is regulated by the United States Government to ensure their survival.

For more than 9,000 years Native Americans have lived on its shores, fishing and hunting in small nomadic bands. The lake sits entirely within the Pyramid Lake Indian Reservation, home of the Pyramid Lake Paiute Tribe, which currently numbers around 2500 individuals living in three small settlements around the lake and nearby. The tribe now derives significant portion of its income from fishing, boating, and camping fees.

North of Pyramid Lake, and along the route photographed by Jean-Pierre Bonfort in 2011, are large dry lake beds, or playas, which occasionally hold a few inches of water in the winter, but are scoured by fierce sun and windstorms during the summer. The largest of them, the Black Rock Desert, is the site of the Burning Man Festival. The more than 50,000 people attending the festival each year pass through the Pyramid Lake Indian Reservation, and the contrast between the ancient and contemporary tribes is a striking one. Surrounded by mountains, and a large expanse of blue water in a rocky desert, Pyramid Lake is one of America's most prominent visual anomalies.

William L. Fox

Director, Center for Art + Environment of Nevada Museum of Art, USA

These thirty-two photographs
were shot during a one-day drive
with William L. Fox on October 4, 2011.

The set will be exhibited
at the Nevada Museum of Art in Reno, Nevada
from January 12 to May 5, 2013.

Five copies of this set were printed
by the photographer in Grenoble, France
in November 2012
on C Canson paper using an inkjet printer.



W 1/5

1/5

